

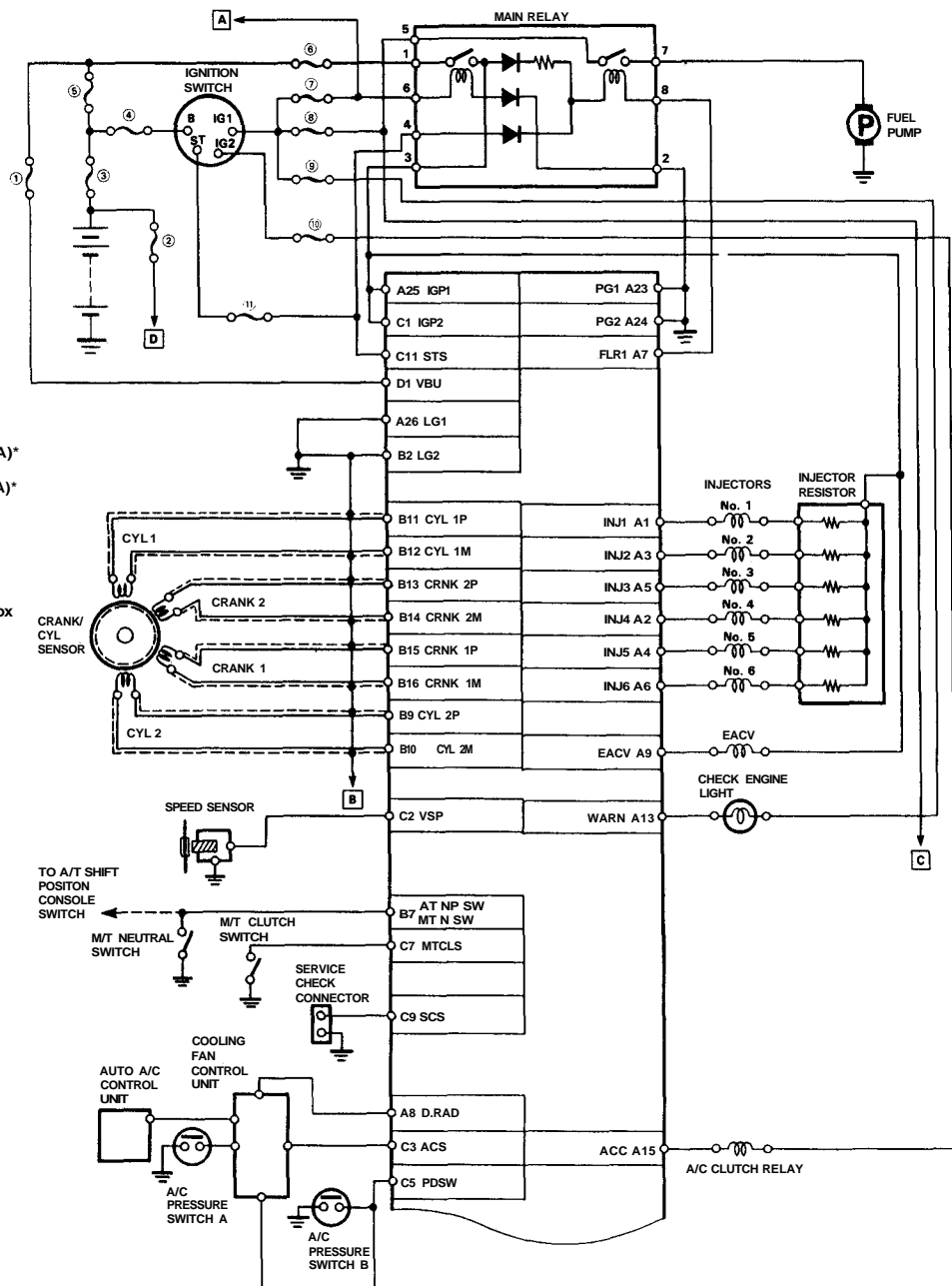
# System Description

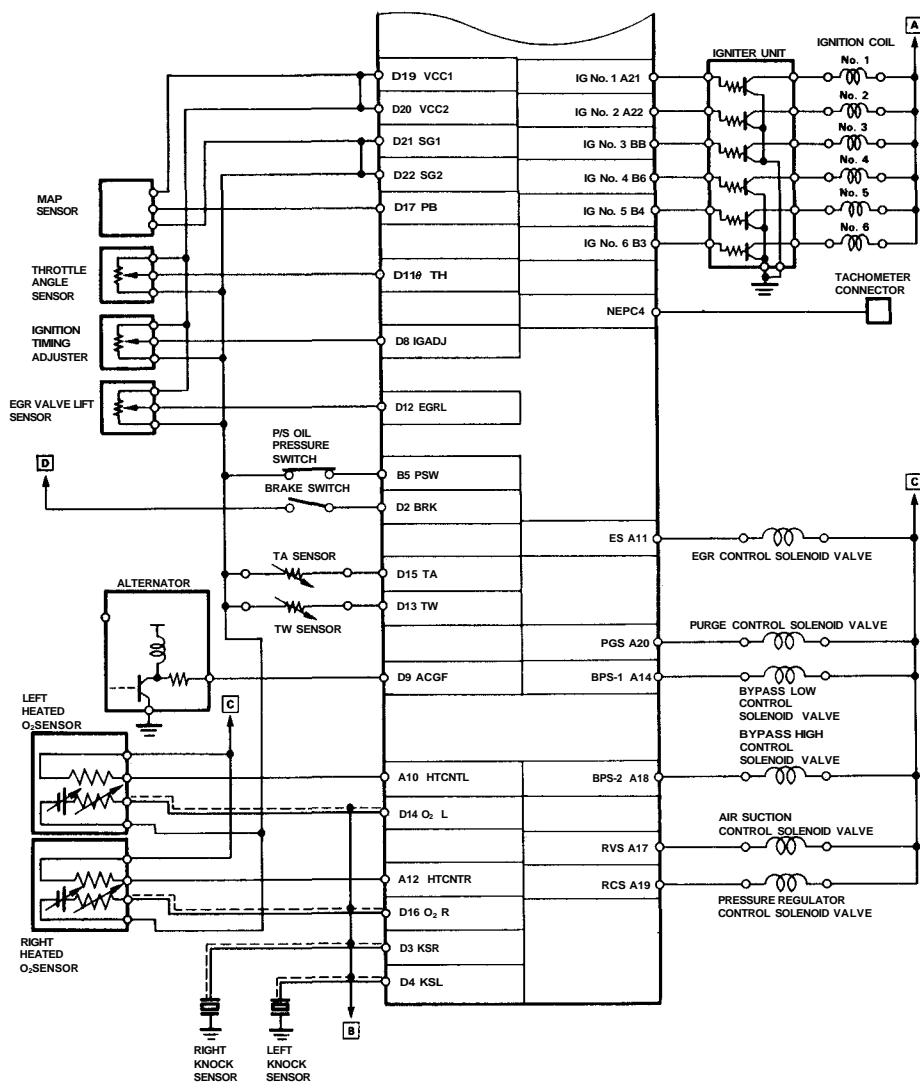
## Electrical Connections

### FUSES

- ① No. 15 (ACG) (7.5 A)
- ② STOP & HORN (20 AC)
- ③ MAIN FUSE (BATTERY) (120 A)\*
- ④ MAIN FUSE (IG SW) (50 A)\*
- ⑤ MAIN FUSE (FUSE BOX) (50 A)\*
- ⑥ No. 5 (20 A)
- ⑦ No. 25 (IG COIL) (30 A)
- ⑧ No. 22 (FUEL PUMP) (20 A)
- ⑨ No. 13 (BACK UP LT) (7.5 A)
- ⑩ No. 3 (RR DEF) (15 A)
- ⑪ No. 14 (EFI STS) (7.5 A)

\*: In the under-hood fuse/relay box





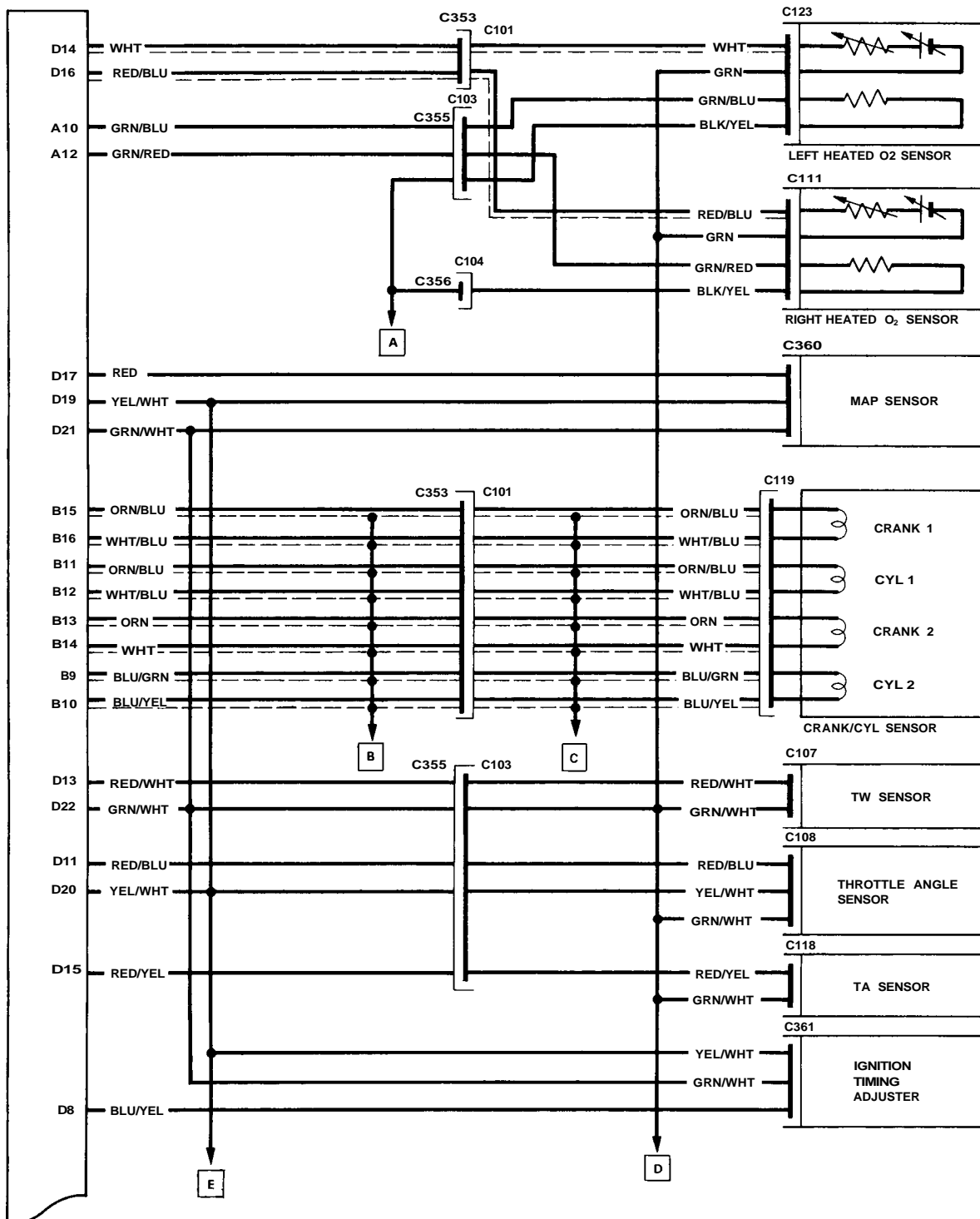
A1	A2	A5	A7	A8	A11	A13	A15	A17	A19	A21	A23	A25	B1	B3	B5	B7	B8	B11	B13	B15	C1	C3	C5	C7	C9	C11	D1	D3	D5	D7	D8	D11	D13	D15	D17	D19	D21		
A2	A4	A6	A9	A10	A12	A14	A16	A18	A20	A22	A24	A26	B2	B4	B6	B9	B10	B12	B14	B16	C2	C4	C6	C8	C10	C12	D2	D4	D6	D9	D10	D12	D14	D16	D18	D20	D22		

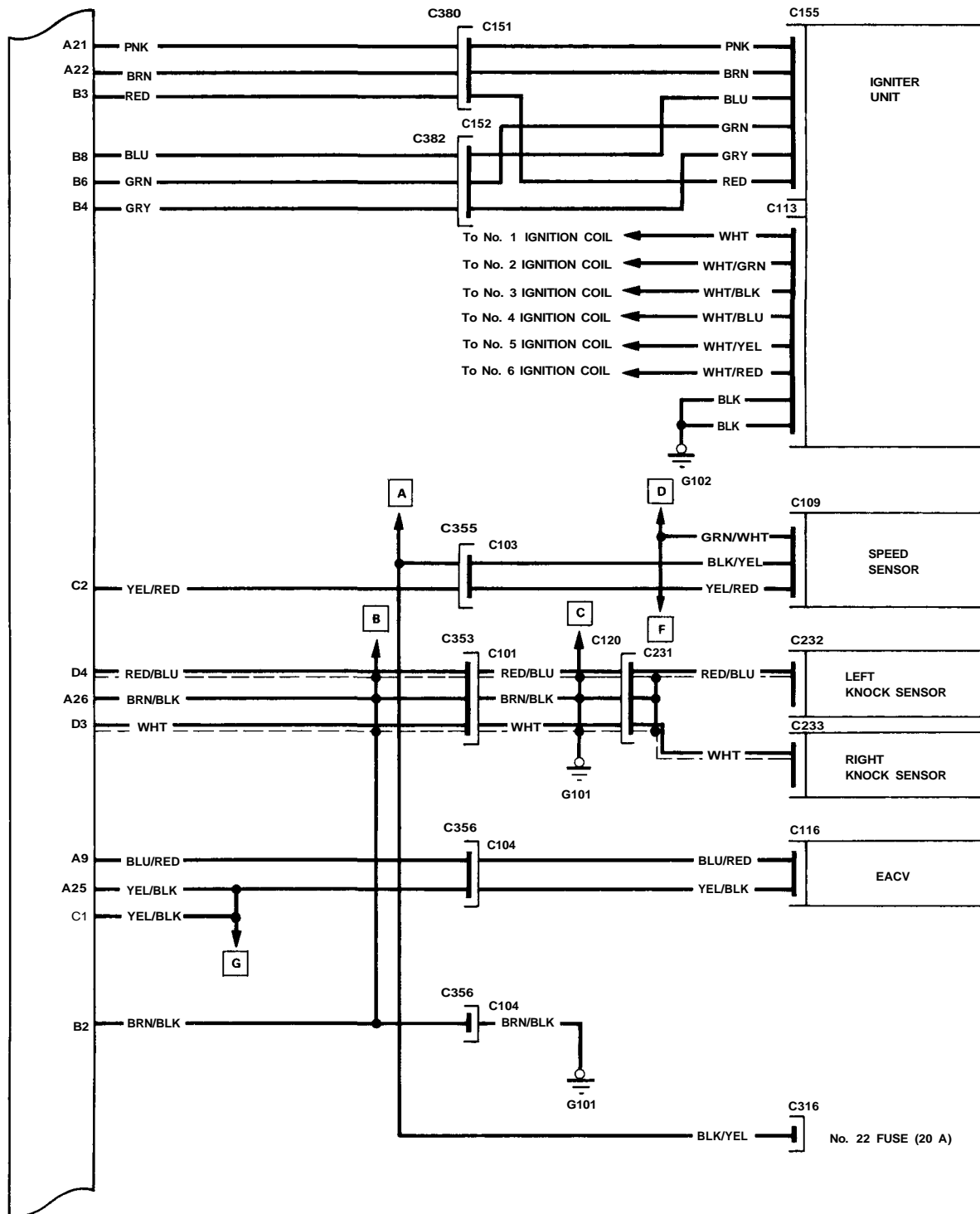
TERMINAL LOCATION

(cont'd)

# System Description

## Electrical Connections (cont'd)

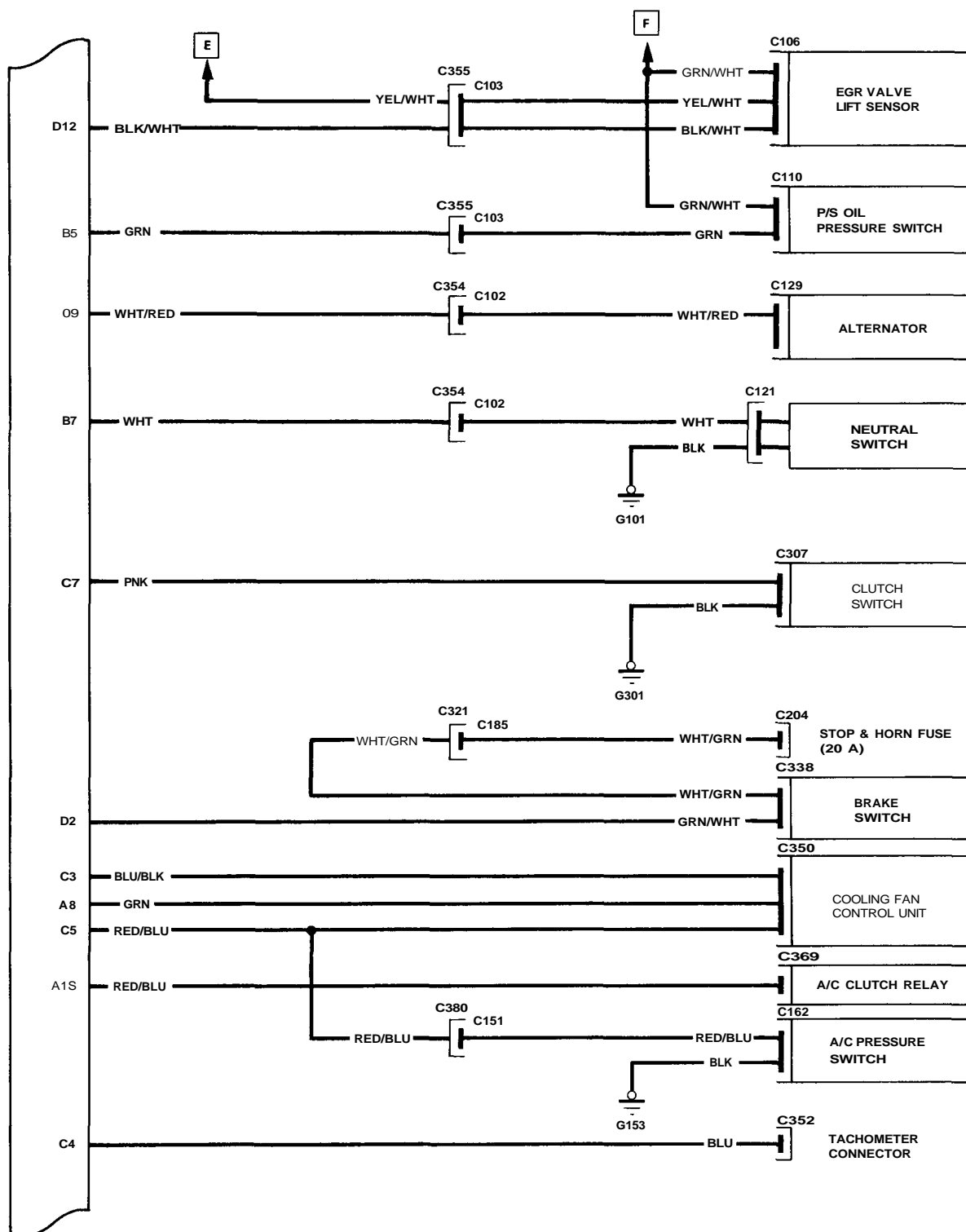


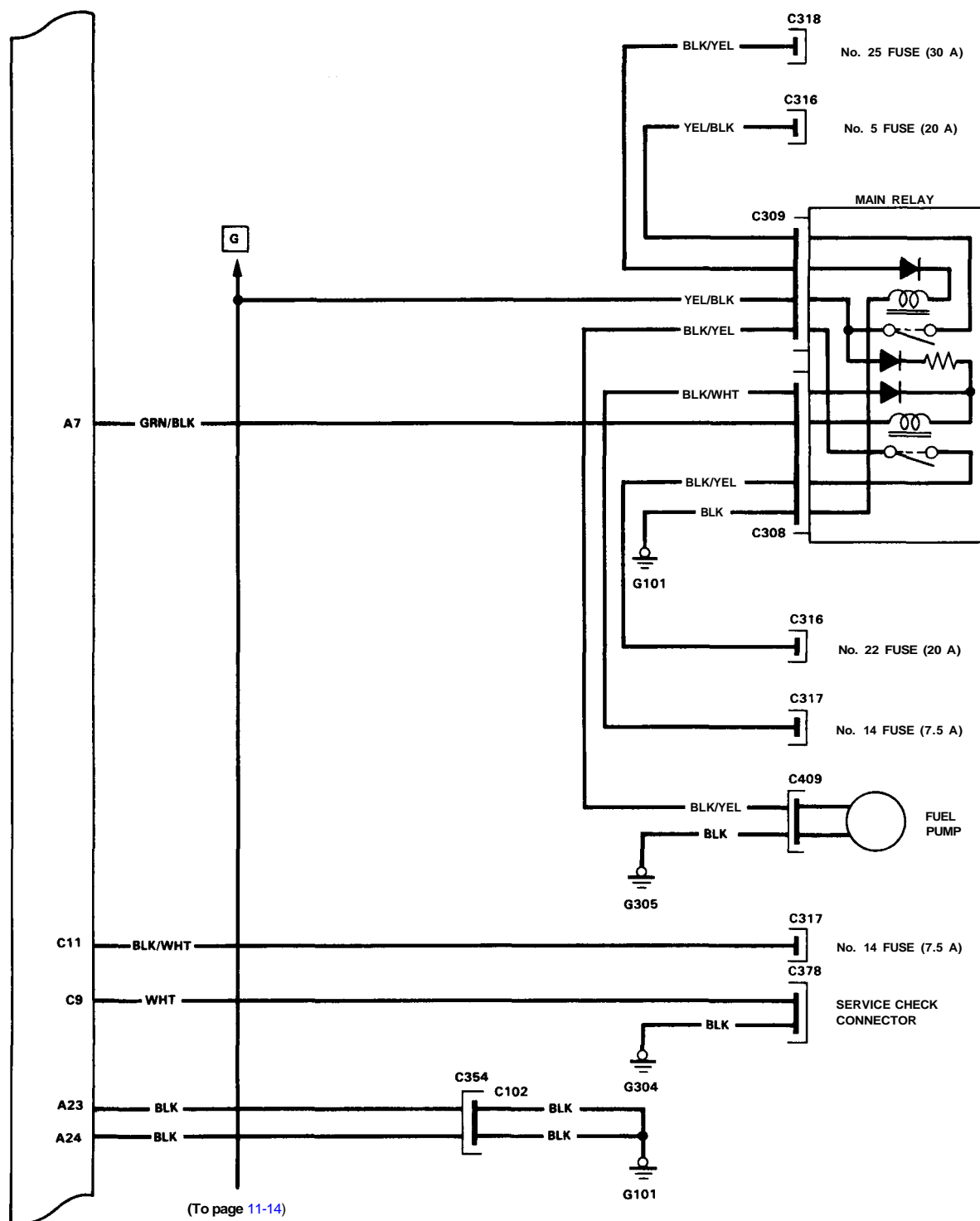


11-11

# System Description

## Electrical Connections(cont'd)





(cont'd)

# System Description

## Electrical Connections (cont'd)

